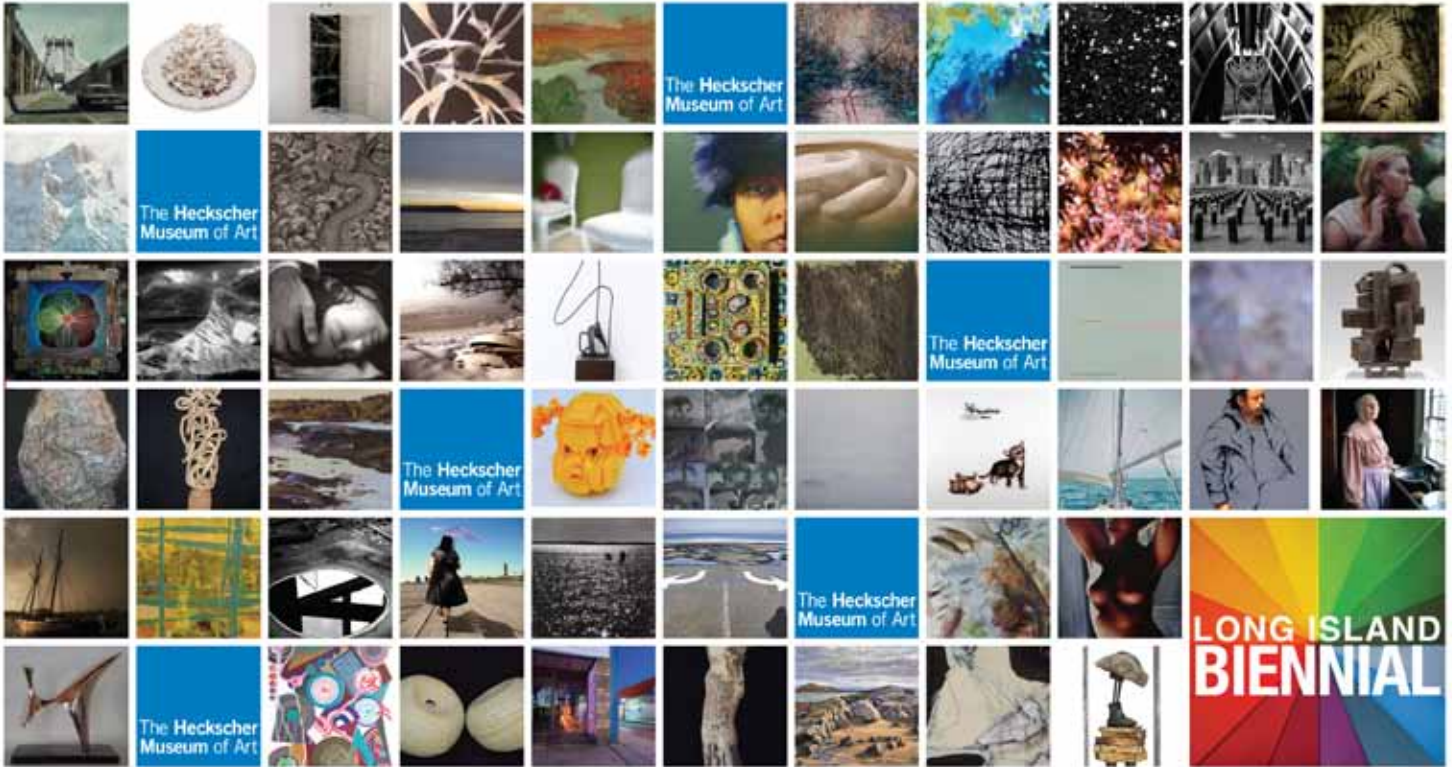
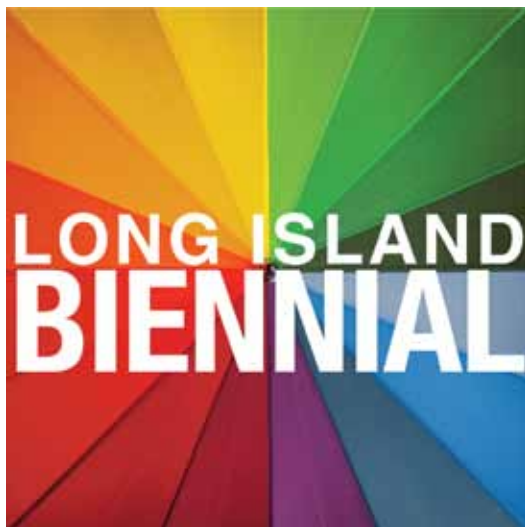


# The Heckscher Museum of Art

## EXHIBITION RESOURCE GUIDE FOR TEACHERS



Left to right: Artwork details in alphabetical order.



August 16 - November 30, 2014

### WHAT'S INSIDE

About the Exhibition.....	1
Exhibition-Related Websites.....	2
Exhibition-Related Vocabulary.....	3
Select Images.....	4
Everything You Need @ <a href="http://www.heckscher.org">www.heckscher.org</a> .....	10

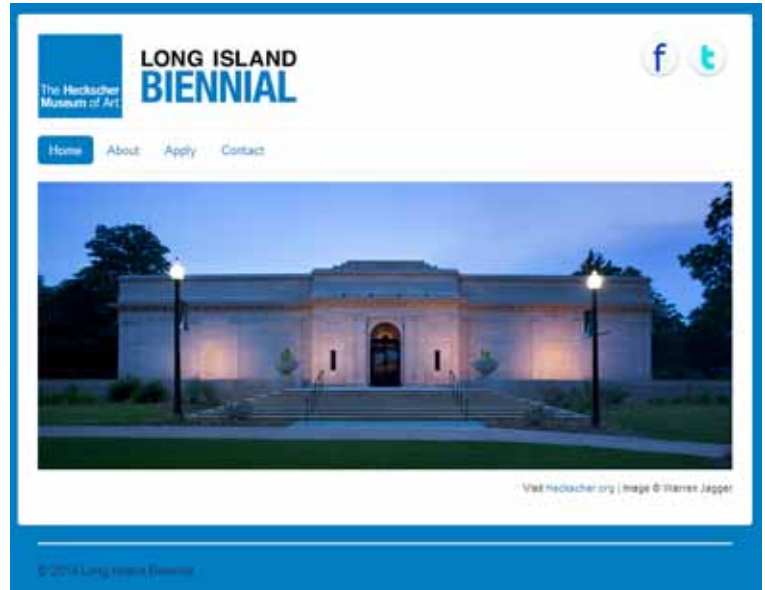


2 Prime Avenue  
 Huntington, NY 11743  
 631.351.3250  
[www.heckscher.org](http://www.heckscher.org)  
 Education Department  
 631.351.3214

# ABOUT THE EXHIBITION

Inaugurated in 2010, the *Long Island Biennial* is a juried exhibition that offers Long Island's contemporary artists an opportunity to share their work with a broad public, deepening the connections among artists and between artists and the communities where they live.

This year, jurors Dan Christoffel, Artist-in-Residence, Adjunct Professor, LIU Post; Renato Danese, Danese Corey, New York; and Helen A. Harrison, Director, Pollock-Krasner House and Study Center, East Hampton, selected 56 works of art from 310 entries. The exhibition features paintings, sculpture, photography, mixed media work, and works on paper.



Visit the *Long Island Biennial* website  
[www.longislandbiennial.org](http://www.longislandbiennial.org)  
to see images of all submitted works of art  
and works selected for the exhibition.

# ARTISTS IN THE EXHIBITION

Alexander Adell  
Monica Banks  
Edward Batcheller  
Ennid Berger  
Catherine Bezas  
Joan Branca  
Esther Marie Caponigro  
Philippe Cheng  
Joseph Constantino  
Sandra Daniel  
Riccarda de Eccher  
Bernadette De Nyse  
Anne Devine  
Jennifer Drucker

Paul David Elsen  
Alex Ferrone  
Kathryn Gardner  
Miranda Gatewood  
Raymond Germann  
Linda Giacalone  
Philip Gladkov  
Phyllis Goodfriend  
Doris Gootnick  
Cynthia Grimm  
Elaine Grove  
Edward Hall  
Sylvia Harnick  
Wei-An Huang

Takafumi Ide  
Sarah Jaffe Turnbull  
Anna Jurinich  
Lita Kelmenson  
Barron Krody  
Deborah Lark  
Neil Leinwohl  
Lili Maglione  
Christa Maiwald  
Richard Marr  
Terence McManus  
John Micheals  
Robert Lind Olesen  
Laura Powers-Swiggett

David Quinn  
Alan Richards  
Michael Ruggiero  
Neill Scholl  
Anne Seelbach  
Victoria Selbach  
Dick Shanley  
Dee Shapiro  
William Shillalies  
Victoria Sinacori  
Megan Sirianni-Brand  
Neill Slaughter  
Dan Welden  
Tmima Z

# EXHIBITION-RELATED WEBSITES

**Alexander Adell**

<http://www.adellart.com>

**Monika Banks**

<http://www.monocabanks.com>

**Edward Batcheller**

<http://edwardbatcheller.com/home.html>

**Ennid Berger**

<http://ennid.com>

**Joan Branca**

<http://www.joanbranca.com>

**Esther Marie Caponigro**

<http://www.esthermarieart.com>

**Philippe Cheng**

<http://www.philippecheng.com>

**Sandra Daniel**

<http://sandidanielphotography.com>

**Riccarda de Eccher**

<http://www.deeccher.net>

**Anne Devine**

<http://www.greenscene.org>

**Jennifer Drucker**

<http://www.jenniferdrucker.com>

**Alex Ferrone**

<http://www.alexerrone.com>

**Kathryn Gardner**

<http://www.kathrynjgardner.com>

**Miranda Gatewood**

<http://mirandagatewood.wordpress.com>

**Linda Giacalone**

<http://www.lindagiacalone.com>

**Phyllis Goodfriend**

<http://www.phyllisgoodfriendphoto.com>

**Cynthia Grimm**

<http://www.pixelstickphoto.com>

**Elaine Grove**

<http://elainegrove.com>

**Sylvia Harnick**

<http://sylviaharnickart.com>

**Wei-An Huang**

<http://www.weianhuang.com>

**Takafumi Ide**

<http://blog.takafumiide.com>

**Sarah Jaffe Turnbull**

<http://www.sarahjaffeturnbull.com>

**Anna Jurinich**

<http://annajurinich.com>

**Barron Krody**

<http://krodypaintings.com>

**Neil Leinwohl**

<http://www.neilleinwohl.info>

**Lili Maglione**

<http://www.lilimaglione.com>

**Christa Maiwald**

<http://christamaiwald.com>

**David Quinn**

<http://www.dquinnphotography.com>

**Alan Richards**

<http://alanrichardsart.com>

**Michael Ruggiero**

<http://mkruggie.photoshelter.com>

**Anne Seelbach**

<http://www.anneseelbach.com>

**Victoria Selbach**

<http://www.victoriaselbach.com>

**Dick Shanley**

<http://dickshanley.com>

**Dee Shapiro**

<http://www.deeshapiro.com>

**William Shillalies**

<http://billshillalies.com>

**Victoria Sinacori**

<http://www.victoriasinacori.com>

**Megan Sirianni-Brand**

<http://www.megansirianni-brand.net>

**Neill Slaughter**

<http://www.neillslaughter.com>

**Dan Welden**

<http://www.danwelden.com>

# EXHIBITION-RELATED VOCABULARY

**abstract:** A work of art that does not show a real person, place, or thing; abstract art focuses on formal elements; such as color, shape, and line.

**depth:** The apparent distance from front to back or near to far in an artwork.

**emphasis:** The point(s) of interest that pull(s) the viewer's eye to important part(s) of a work of art.

**geometric shape:** A shape that obeys the laws of geometry. Geometric shapes have definitions or rules for their creation (ex: a square has four equal sides at right angles).

**gesture:** A movement of the body or limbs that expresses or emphasizes an idea or attitude.

**landscape:** A work of art of showing an outdoor place.

**movement:** The act or process of moving, especially change of place or position. This may be actual motion or implied by the arrangements of parts to move the eye.

**mixed media:** When more than one material, or **medium**, is used in a work of art.

**organic shape:** A shape with flowing, natural edges that cannot be "defined" by any set of rules.

**pattern:** The regular repetition of colors, lines, shapes, or other elements in a work of art.

**portrait:** A work of art showing a person or animal.

**rotational symmetry:** A type of **symmetry** in which lines/shapes rotate, or spin, around a center point.

**reflection:** A type of **symmetry** in which lines/shapes reflect, or create a mirror image, across a line of reflection.

**repetition:** A way of combining elements of art so that the same elements are used over and over again.

**sculpture:** A work of art that is not **two-dimensional**, or flat, but instead **three-dimensional**, having length, width, and depth. Sculptures may be created from many **media** such as marble, bronze, clay, or found objects.

**symmetry:** The correspondence in size, form, and arrangement of parts on opposite sides of a plane, line, or point.

## SELECT IMAGES

# Long Island Biennial 2014

August 16 - November 30, 2014



Phillip Gladkov, *Untitled Mandala*, 2014, Mixed media acrylic. Courtesy of the Artist.

## SELECT IMAGES

# Long Island Biennial 2014

August 16 - November 30, 2014



Bernadette De Nyse,  
*Lilapsophobia Drawing Study  
No. 1*, 2012, Ebony pencil on  
paper. Courtesy of the Artist.

## SELECT IMAGES

# Long Island Biennial 2014

August 16 - November 30, 2014



Tmima Z, *The Sound of Silence*, 2014, Wood, metal, stone, leather, fabric, paper. Courtesy of the Artist.

## SELECT IMAGES

# Long Island Biennial 2014

August 16 - November 30, 2014



Dee Shapiro, *Tullio's Offering*, 2014, Ink, paint, and collage on board.  
Courtesy of the Artist.



## SELECT IMAGES

# Long Island Biennial 2014

August 16 - November 30, 2014

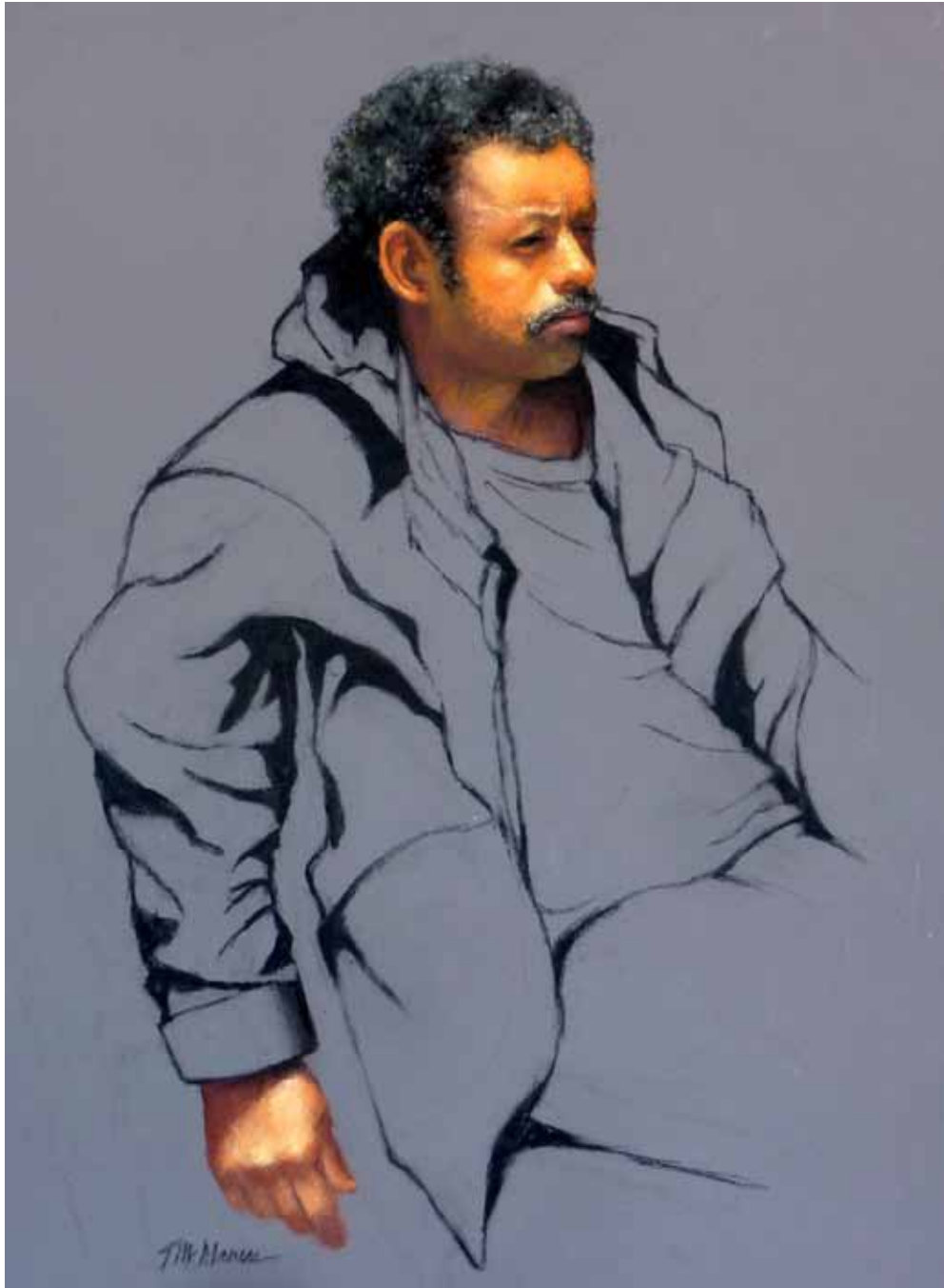


Raymond Germann, *New York Harbor*, 2013, Digital photograph. Courtesy of the Artist.

## SELECT IMAGES

# Long Island Biennial 2014

August 16 - November 30, 2014



Terence McManus, *Slouching Man*, 2013, Pastel on paper.  
Courtesy of the Artist.

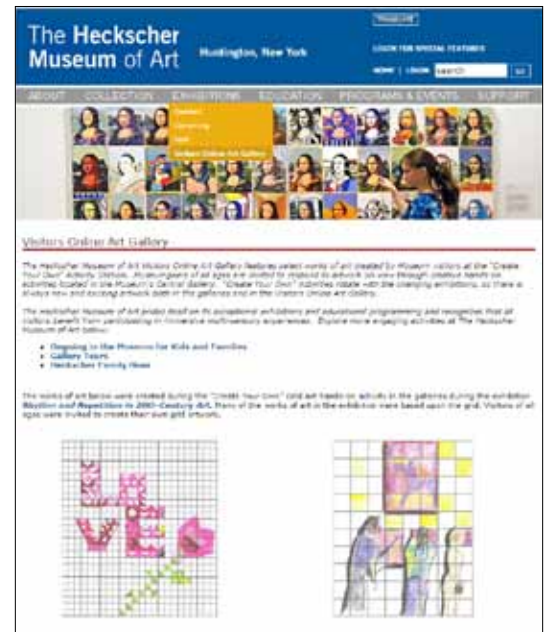
## EXHIBITION RESOURCE GUIDES for TEACHERS

**Visiting the Museum?** Prepare your students before their trip.

**Looking for new lesson ideas?** Use the guides as inspiration any time!

Guides are developed on a rolling basis and are available free of charge. Resources include exhibition-specific information such as the following:

- **Artist biographies**
- **Exhibition summaries**
- **Full-color artwork images**
- **Vocabulary words**
- **Pre- and post-visit activities**



## SHARE YOUR STUDENTS' ARTWORK!

Have you taught your students a lesson inspired by artwork on view in the Museum?

Share it with a broader community in the Museum's **Visitors Online Art Gallery**.

Submit your students' artwork (.jpg files) to Kristina Schaaf at [schaaf@heckscher.org](mailto:schaaf@heckscher.org).

